



Highway101 BPMS Suite

Miracom
Leading Technology Group

Highway 101

BPMS

*Only the fittest survive.
Highway101 BPMS Suite
will drive your business to success.*



Business Process Management System



BPMS
New Business



Highway101 BPMS Suite is the real BPMS solution that supports the thoroughgoing integration of business process and applications, based on Web Services.

What is BPMS?

As the business environment changes suddenly - for example, the market demand changes; the enterprise competition deepens and gets globalized; related laws changes - the business process changes and its complexity increases. In this environment, the enterprise competition is how to optimize the core tasks of company promptly and accurately while following the rapidly changing business environment.

BPMS (Business Process Management System) manages business process of company systematically. This system defines business process extending from intra-company organization, inter-organization to exterior customers and partners, with standardized language; executes the process defined through human resource and system resource; monitors the execution data in real-time; measures the performance index; analyzes the execution results; and supports to improve current process.

↳ Highway101 BPMS Suite

Highway101 BPMS Suite provides agility, flexibility and visibility for business process management in rapidly changing business environment.

↳ Agility

It provides IT infrastructure to cope with rapidly changing market environment and demand with agility.

↳ Flexibility

It provides flexibility for various communication



methods with key system inside company and exterior business partners and customers.

➤ Visibility

It allows understanding the core business flow and performance index of company in real-time so as to detect important business opportunities and risks in advance.

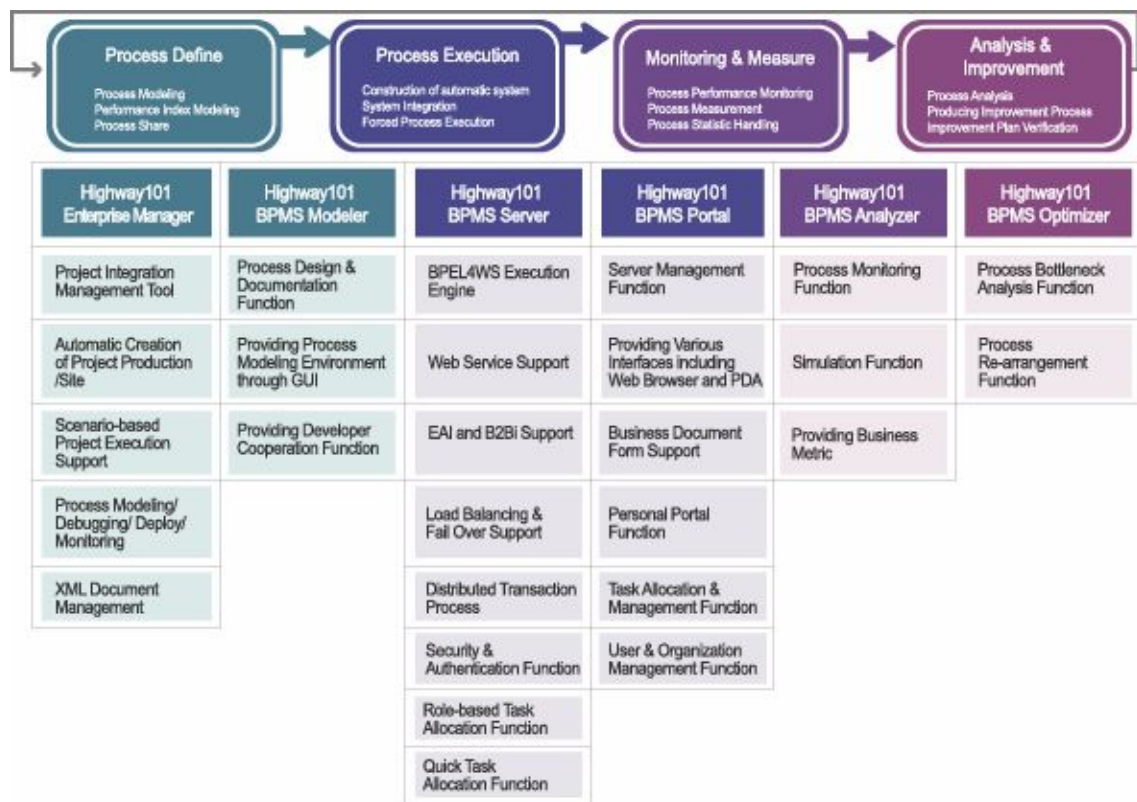
- ▣ By 2005, at least of 90% of large enterprises will have BPM in their enterprise nervous system
- Jim Sinur, Gartner, 2001

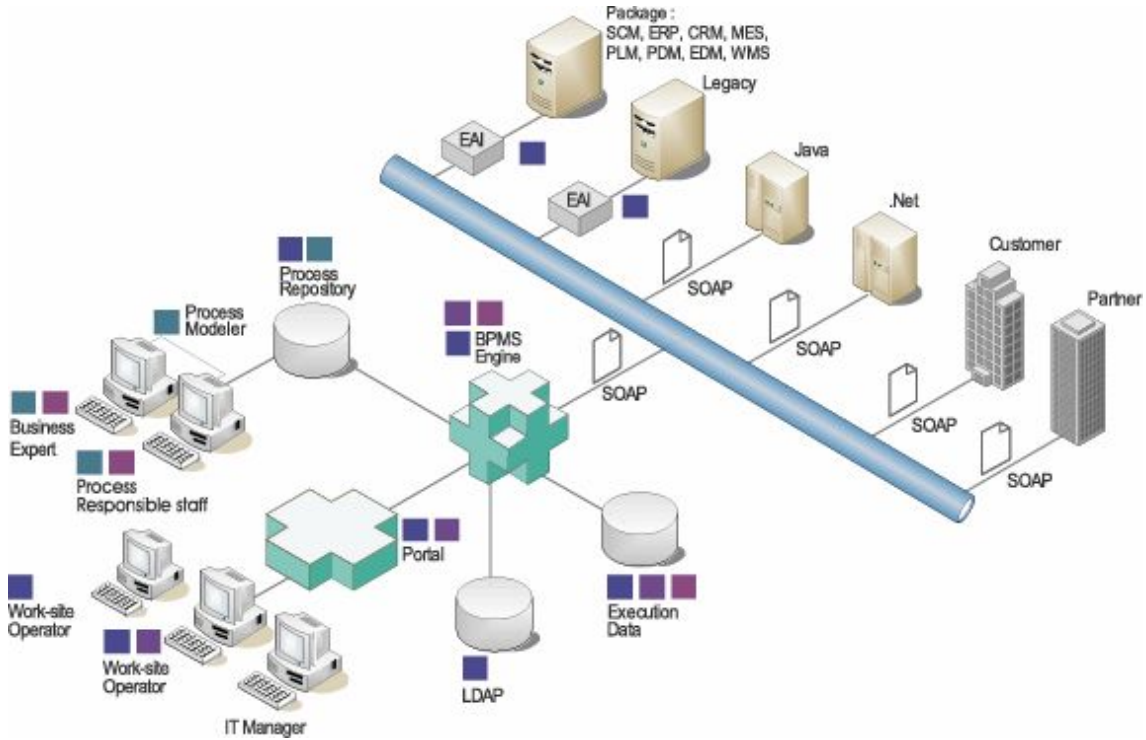
- ▣ Manufacturing, financial services, retail and distribution companies will lead the way, pushing total worldwide BPM spending to \$6.32 billion in 2005
- Aberdeen Group, 2002

- ▣ I think of BPM as a way to run a business that focuses on end-to-end business processes
- Michael Hammer, 2003



BPMS Procedure and Highway101 BPMS Suite Components





BPMS Procedure and Highway101 BPMS Suite Components

↳ Service-oriented Architecture (SOA)

- Platform-independent
- Loose coupling of applications
- Business level granularity
- Discoverability of applications

↳ Process portal

- Enterprise portal
- UI customizable by user
- Work List for work responsible staff
- Manager UI to manage users and processes

서비스 관리



워크리스트 관리



↳ Industrial Standard Support

- Portlet(JSR-168)
- BPMN(Business Process Modeling Notation)
- BPEL4WS(Business Process Execution Language for Web Services)
- WS-Coordination, WS-Transaction

- WSDL(Web Service Description Language)
- SOAP
- W3C XML Schema

↘ Web service support & BPEL execution engine

- Web service-based SOA support
- BPEL 1.1 (Business Process Execution Language) support

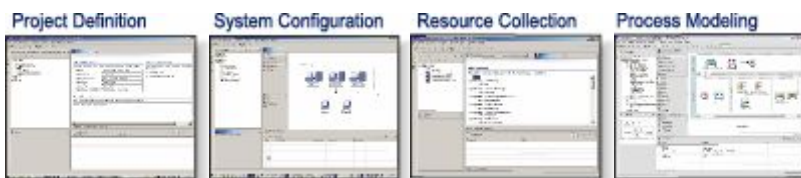
↘ Process monitoring

- Providing real-time monitoring for process execution
- Providing KPI measurement tool per process



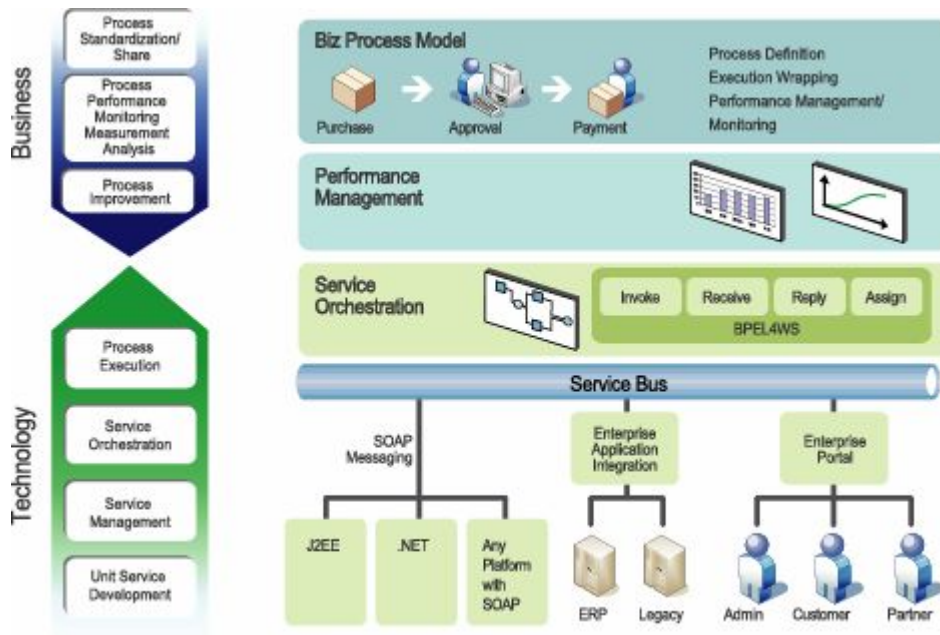
↘ Integration development environment

- Providing the integration development environment that supports process analysis, modeling and optimization
- Providing process-version management function
- Providing the application link environment associated with the process model
- Providing output management function for tasks per stage related to the project



By 2006, more than 60% of companies will use service oriented architectures(SOAs) as the foundation for new mission critical business software applications. - Gartner

Highway101 BPMS Suite Architecture



Return On Investment

Business

- ▣ It visualizes core business processes of company and manages them as tangible assets.
- ▣ It understands enterprise business process flow in real-time and predicts business opportunities or risks in advance.
- ▣ It supports agile change of business process in accordance with rapidly changing business environment
- ▣ It improves process by managing performance index.
- ▣ It provides quantitative evaluation index for organization and employees.
- ▣ It builds business process repository, shares the business process and re-uses process for similar works.
- ▣ It is easy to introduce processes of advanced enterprises through BPO(Business Process Outsourcing).
- ▣ It provides various types of analysis data for process execution.
- ▣ In case of business process change, it simulates in advance and predicts cost change.
- ▣ It reduces error occurrence through process automation and reduces cost by minimization of handling time and required manpower.
- ▣ It minimizes time and manpower consumed for training new employees.

↳ Technology

- ▣ It provides one united-IT infrastructure with web service-based SOA.
- ▣ It provides platform-independency.
- ▣ It can handle all BPMS-related process within one integrated development environment.
- ▣ It complies with BPMS-related industrial standards so that it easily connects with exterior systems.
- ▣ It can cope with changes of work-site demands with agility by classifying business functions into unit service through web service.
- ▣ Applications can be linked, based on business process
- ▣ It easily produces BPMS-related project outputs per stage.
- ▣ It utilizes existing IT resources effectively.

BPM helped reduce insurance claims costs from as much as \$8 to 32 cents and decrease cycle times for processing new business and claims by 50 percent to 75 percent

- Gartner

In a survey of several corporations, Michael Hammer learned that BPM helped to slash the cost of procurement transactions by more than 80 percents, while shrinking procurement times by 90 percent.

- Alchemy Magazine, 2002

Vertical Markets

↳ Government

- ▣ E-government implementation; integrated process implementation between ministers; civil service improvement; procurement management; budget management; policy management etc.

↳ **Banking & Insurance**

▣ Risk evaluation management; loan examination; new deposit; credit, debt, investment examination; audit; pension; call center etc.

↳ **Manufacturing**

▣ 6-sigma; product development; order handling; production plan; process management; quality management; shipping management; partner management; part/ material management; claim handling; facility management etc.

↳ **Telecommunication**

▣ Customer management; sales management; service management; call center management; facility management etc.

↳ **Distribution & Transportation**

▣ Procurement management; sales management; branch management; partner management; customer management; material management etc.

↳ **Medical**

▣ Patient history management; hospital administration management; insurance handling; receipt management etc.

↳ **Education**

▣ Examination management; lecture organization management; scholarship management; registration fee receipt; facility management etc.